

January 30, 2009

^Resident Name
^Resident Address
Upper St. Clair, PA 15241

IN RE: MAYVIEW ROAD WIDENING PROJECT FOR THE BOYCE MAYVIEW PARK

Dear _____:

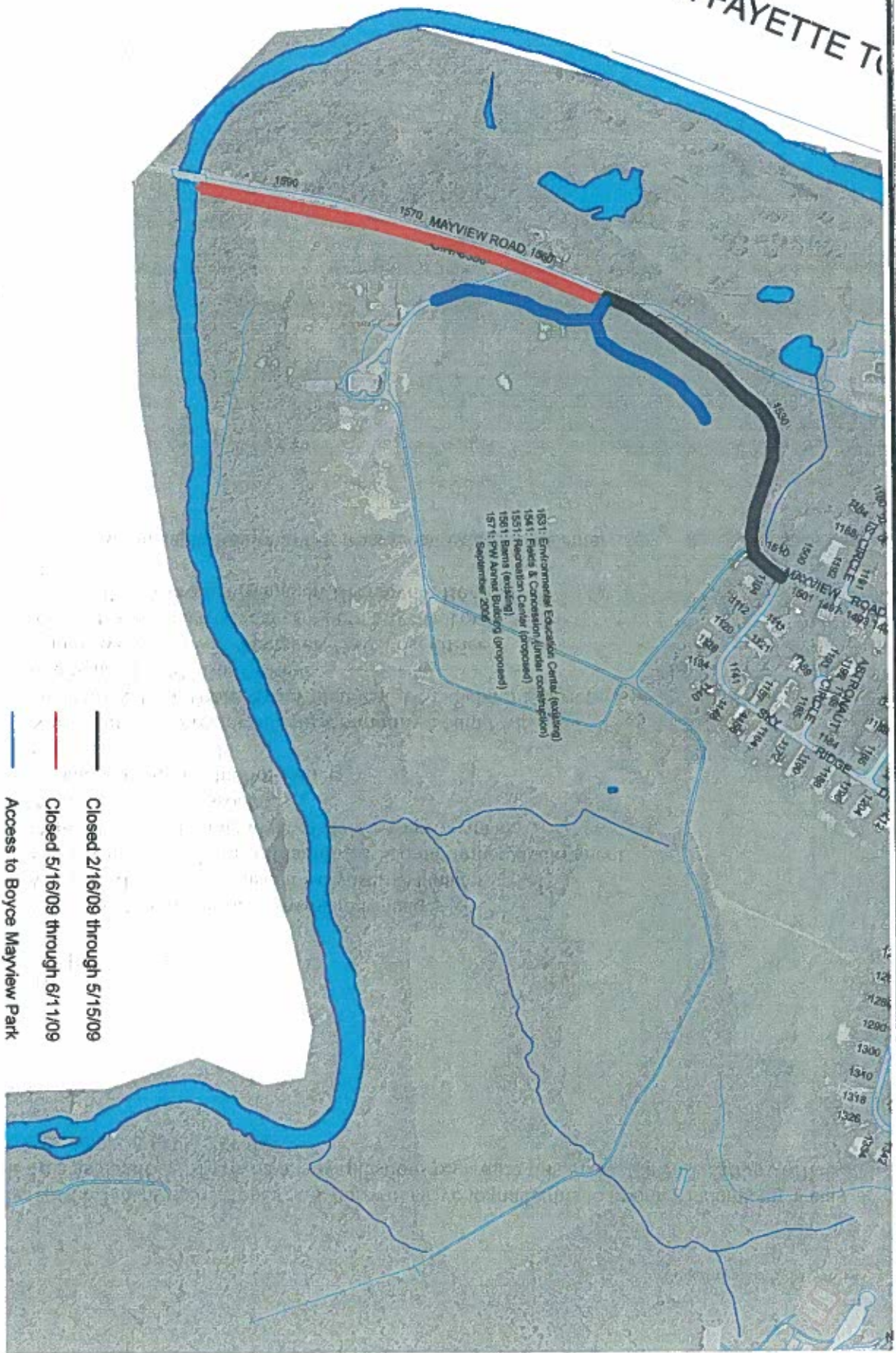
Boyce Mayview Park and most specifically the Community Recreation Center on Mayview Road with its entrance between Sky Ridge Drive and Chartiers Creek will be completed and available to the general public in the summer of 2009. As part of these projects, the entrance to the park will be upgraded with widening to accommodate the numerous improvements including the new recreation center. This work is scheduled to start in February of 2009 with completion sometime in June and will necessitate detours during the widening project's construction. Mayview Road will be closed in two phases to the park entrance during this time period.

The Pennsylvania Department of Transportation will post advance ten (10) day notification prior to actual closing, while maintaining access for local traffic up to the entrance of Boyce Mayview Park. The attached map identifies the sections of Mayview Road that will be closed. However, access to the Boyce Mayview Park, the Regional Environmental Education Center and the Community Recreation Center will be maintained at all times.

- The black line on the map is the section of Mayview Road that will be closed from February 16, 2009 through May 15, 2009. During that period, access to Boyce Mayview Park will be from the Chartiers Creek/Mayview State Hospital side of Mayview Road, as noted in red.
- The red line on the map is the section of Mayview Road that will be closed from May 16, 2009 through June 11, 2009. During that period, access to Boyce Mayview Park will be from the Bridgeville side of Mayview Road, as noted in black.

In addition, attached is a detour map approved by the Pennsylvania Department of Transportation which details the types and location of detour signage for this project. The actual detour uses roads that traverse our neighboring communities of Bridgeville and South Fayette Township.

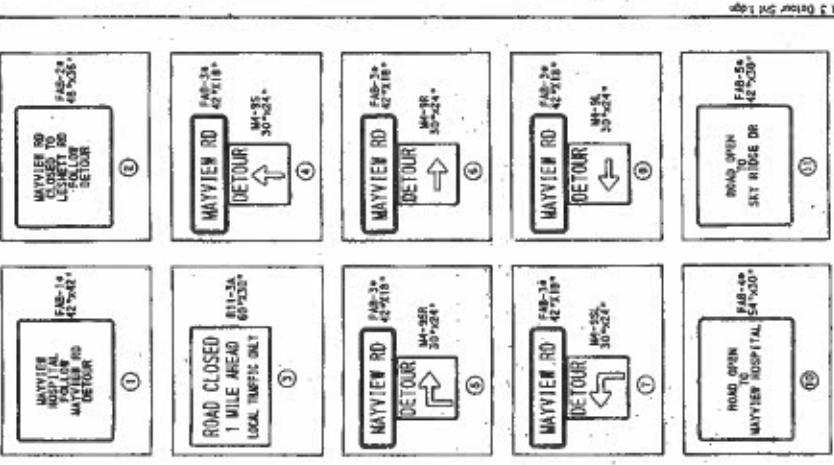
SOUTH FAYETTE TOWNSHIP



- Closed 2/16/09 through 5/15/09
- Closed 5/16/09 through 6/11/09
- Access to Boyce Mayview Park

Mayview Road Closure

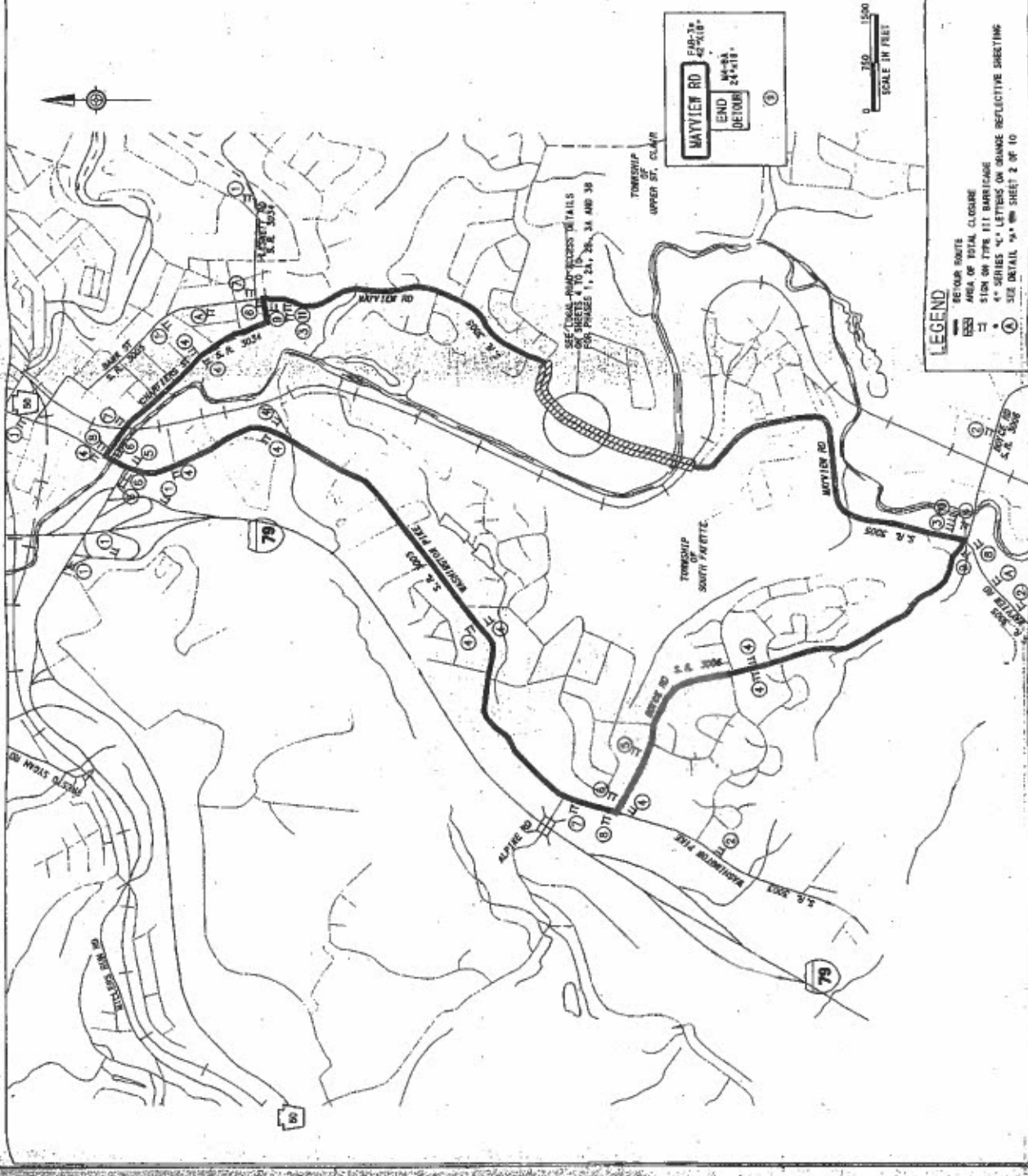
DISTRICT	COUNTY	ROUTE	SECTION	SHEET
9-3	ALLEGANY	3005	A3	
TOWNSHIP	SECTION	DATE	BY	
UPPER ST. CLAIR	REVISION			



REV.	DATE	DESCRIPTION	P.M.	OPER.
DESIGNED	JPA 5/21/01	PROJECT NO. UPR930-0552		
DRAWN	JPA 5/23/01	PROJECT MAYVIEW ROAD		
CHECKED	TEP 7/12/08	PROJECT PUBLIC IMPROVEMENTS		
REVISED	CSH 1/20/08	TITLE		
APPROVED	SAI 2/19/08			
PROJECT	SAI 2/19/08			
OPERATOR				



SHEET 2 OF 10



LEGEND

- DETOUR ROUTE
- AREA OF TOTAL CLOSURE
- SIZE ON TYPE 11T BURRIDGE
- 4" SERIES "C" LETTERS ON GRANGE REFLECTIVE SHEETING
- SEE DETAIL "A" ON SHEET 2 OF 10

PL01183 2/14/2008

LET SCALE: 1"=300' 1/8"=1500'